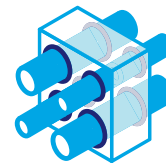
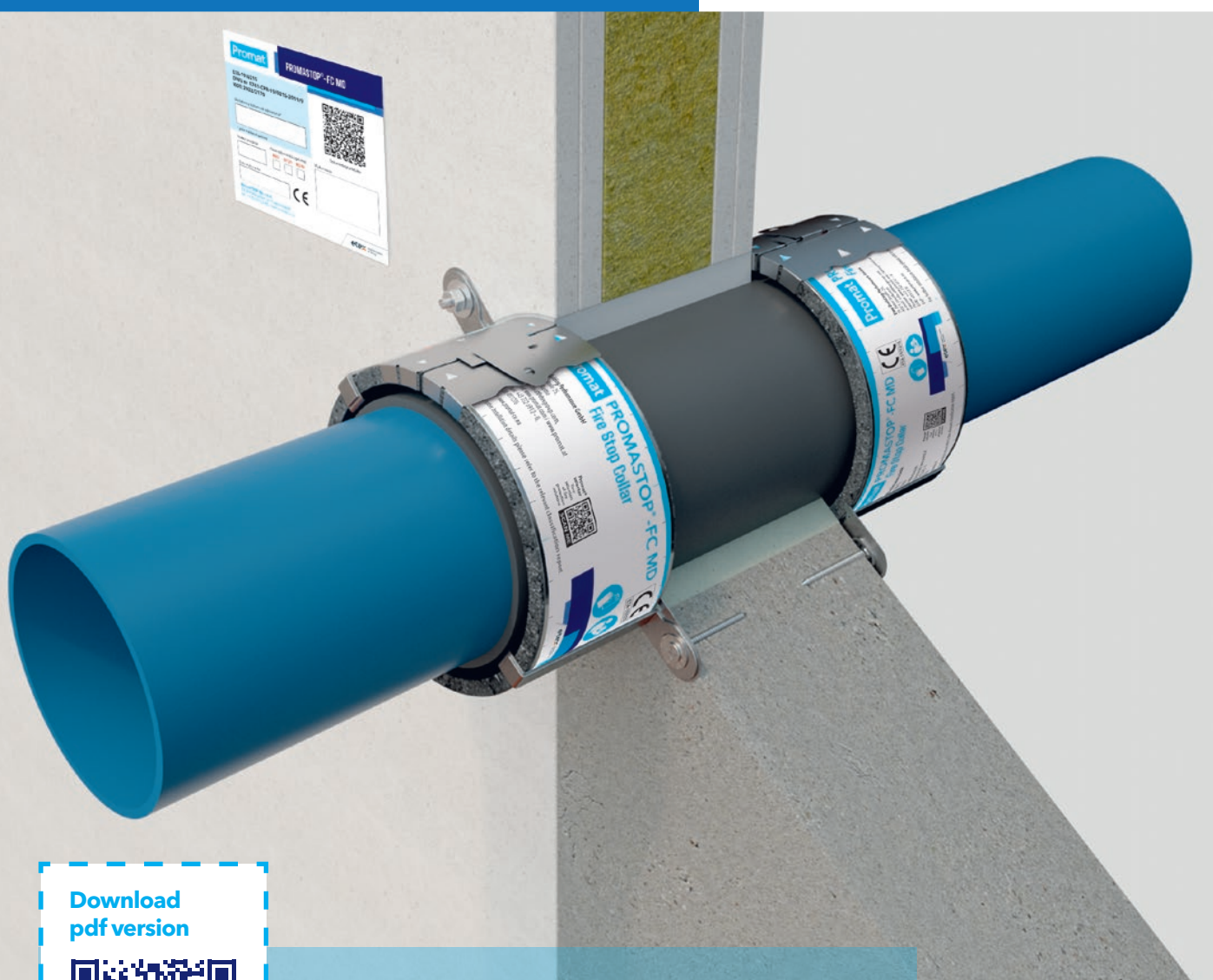


Promat



PROMASTOP®-FC MD Fire protective collar



Download
pdf version





REFERENCE DOCUMENTATION

European Technical Assessment: ETA-19/0215
 Declaration of Performance: 0761-CPR-19/0215-2019/9
 Classification: 01633/22/R181NZP
 Classification: 01633.1/21/R164NZP



PRODUCT DESCRIPTION

The PROMASTOP®-FC MD are firestop collars with a special material which expands when heated. The collars are equipped with fixing holders and locking brackets.

APPLICATION

The collar was tested according to EN 1366-3 for the U/U configuration up to the diameter of 200 mm. The collars are intended for protection of penetrations of plastic and metal pipes in flammable insulation in walls and ceilings. It stops spread of fire and smoke to any adjacent areas, floors, staircases, corridors, etc.

INSTALLATION

The collars can be trimmed to the appropriate length depending on the pipe circumference. The provided mounting brackets should be placed on the ends of the trimmed collars, then bend the fastening hooks and press the serrated edges to the collar. Attach the holders symmetrically to the collars, subsequently fix the PROMASTOP®-FC MD on the pipe by bending the locking hook 180°. Finally, the metal holders must be fixed with utilisation of appropriate steel fasteners to a wall, or ceiling.

ADVANTAGES OF THE SYSTEM/BENEFITS FOR INSTALLERS

- flexible collar,
- fast and easy installation,
- can be trimmed according to the installation diameter,
- tested with various types of plastics, e.g. PP, PE, PVC, insulated installations, and other,
- owing to their small thickness, they are easy to fix in hard to reach places,
- single collar for pipes up to Ø125 mm,
- use category type X.

PACKAGING

- collar 3200 mm (= 7 collars for Ø110 mm),
- 7 locking brackets A***,
- 7 locking brackets B***,
- 21 fixing brackets C***.

Store in a dry, closed area.

*** Purchase of additional packages of brackets is possible.

Technical data and characteristics

Width	about 55 mm
Thickness	about 5.5 mm
Length	3.2 m
Storage	Store in dry conditions
Class of reaction to fire	E
Packaging	Stable, cardboard packaging
Use category	Type X
Swelling temperature	About 190°C

Length of collars depending on installation diameter

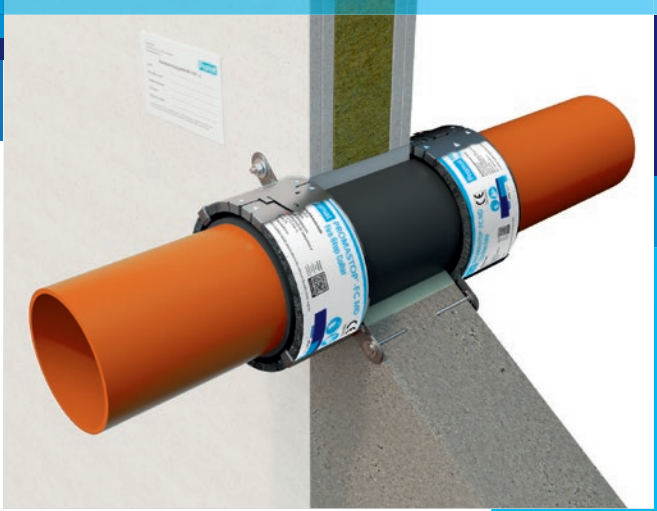
Installation diameter [mm]	Collar length [mm]	Number of collars from one packaging [pcs.]	Number of brackets [pcs.]
40	225	14	2
50	255	12	2
64	300	10	3
75	335	9	3
90	380	8	3
110	445	7	3
125	490	6	4
160	600*	5	2 + 4**
200	725*	4	2 + 4**

* Two collars serially above Ø160 mm.

** Long brackets type D.



FIRE RESISTANCE: EI120



APPLICATION

The minimum thickness of the partitions in which penetrations can be protected with the PROMASTOP®-FC MD collar is:

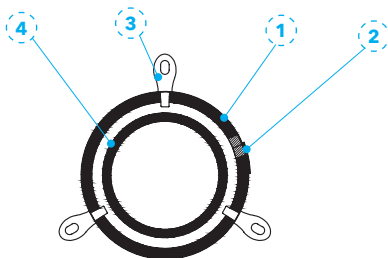
- Flexible wall min. thickness 100 mm
- Rigid wall min. thickness 100 mm
- Rigid wall min. thickness 150 mm

The pipe diameter range is presented in the table below.

Type of pipe	Pipe diameter [mm]
PE-HD	Ø32 ÷ Ø160
PP-H/PP-R	Ø20 ÷ Ø160
PVC-U	Ø32 ÷ Ø160
PE-S2 e.g. Geberit Silent-db20	Ø56 ÷ Ø110
PP-C/PP-MD/PP-C e.g. Geberit Silent-PP	Ø40 ÷ Ø125
PP-MD e.g. Rehau Raupiano plus	Ø40 ÷ Ø125

DETAIL A

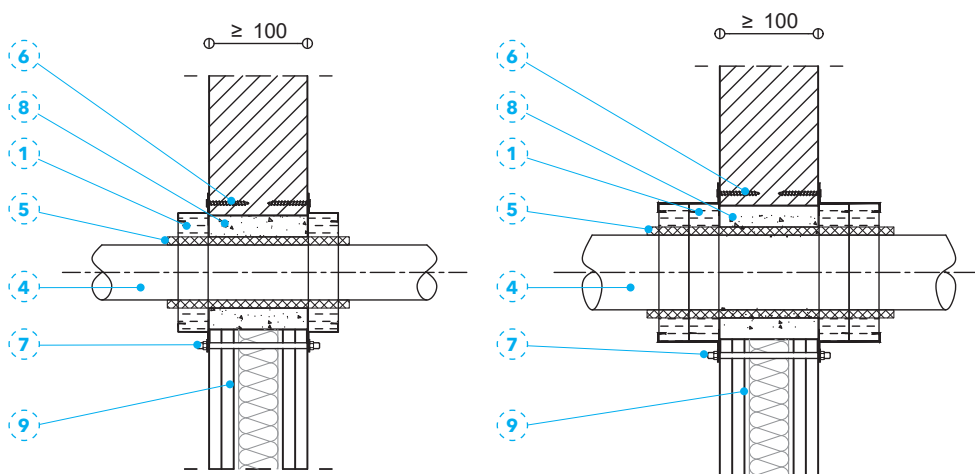
The drawing presents a view of a collar fixed to a pipe at the penetration through the partition. Depending on the collar length, it is necessary to provide an appropriate number of the Type C fixing brackets. The gap around the pipe, of the max. width 31 mm must be filled with the Promat joint filler or cement mortar, e.g. PROMASTOP-M 8 throughout the partition thickness.



Detail A - View of collar

DETAIL B

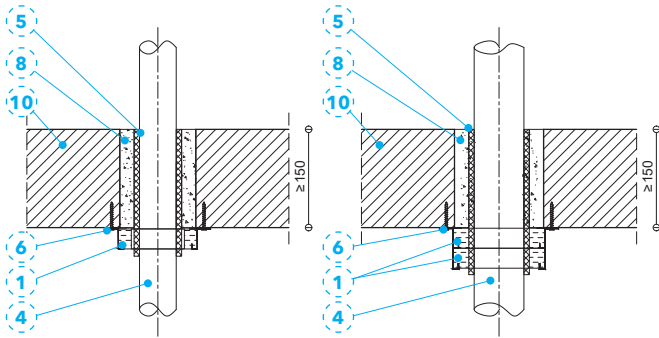
In order to protect the penetrations of pipes going through walls it is necessary to install the collars on both the partition sides. The collars are fixed to the rigid walls with utilisation of the provided steel screws or steel anchors for flexible walls installation takes place with utilisation of threaded rods.



Detail B - Collars fixed to walls

Description of drawings

- | | | | |
|---|--|--|------------------------------------|
| 1 PROMASTOP®-FC MD fire protective collar | 4 Plastic pipe | 7 Fixing material, threaded rod min. M6 | 10 Floor |
| 2 Locking brackets | 5 Flammable insulation maximum thickness 4 mm (optionally) | 8 Seal of peripheral gap, e.g. Promat® joint filler (≤31 mm) | 11 Mineral rock wool |
| 3 Fixing holders | 6 Steel fasteners, e.g. screws or anchors | 9 Wall | 12 PROMASTOP®-CC firestop compound |

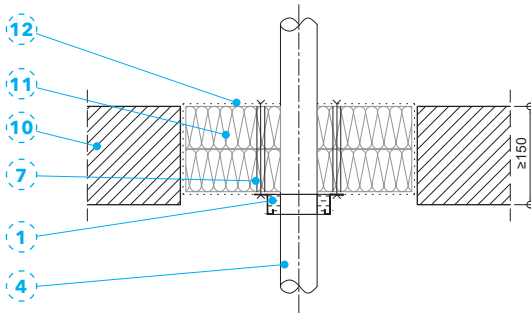


Detail C - Collars fixed under floors

For the pipes with the outer diameters exceeding 125 mm it is necessary to apply double collars, i.e. two collars placed adjacently per side. In such cases, special double-length fixing brackets are utilised (available on request).

DETAIL C

In the case of the penetrations through floors one collar should be provided from the bottom side of the floor only. The installation procedure is the same as for the penetrations through walls. The pipes can be provided with flammable insulation (5) (minimum reaction to fire class E) of maximum thickness 4 mm.



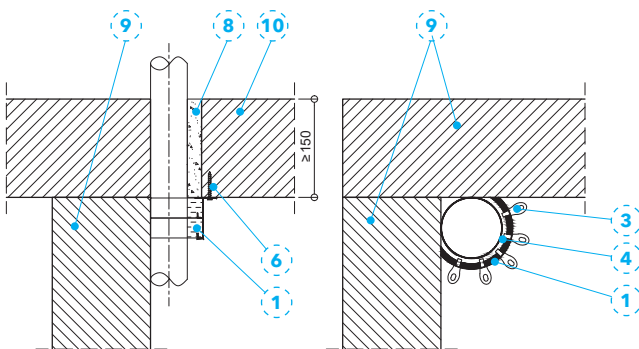
Detail D - Installation of collars under floor sealed with mineral wool and firestop compound

DETAIL D

For big openings in floors penetrated by a plastic pipe the penetrations can be protected by filling the openings with mineral wool (11) min. thickness 100 mm clearance. Each surface of the mineral wool (11) should be covered with the PROMASTOP®-CC (12) firestop compound, min. layer thickness 0.7 mm. The collars (1) installed within the mineral wool should be fixed with utilisation of threaded rods (7), or spiral fixings (4).

DETAIL D

The PROMASTOP®-FC MD (1) collar can be also utilised for protection of penetrations of the plastic pipes, diameter from 40 to 1100 mm, through floors, located in wall corners. In this case, it is necessary to provide double collars, i.e. one collar under another, for all the diameters. The collars are fixed to a partition with utilisation of 2 short C brackets and 2 long D brackets.



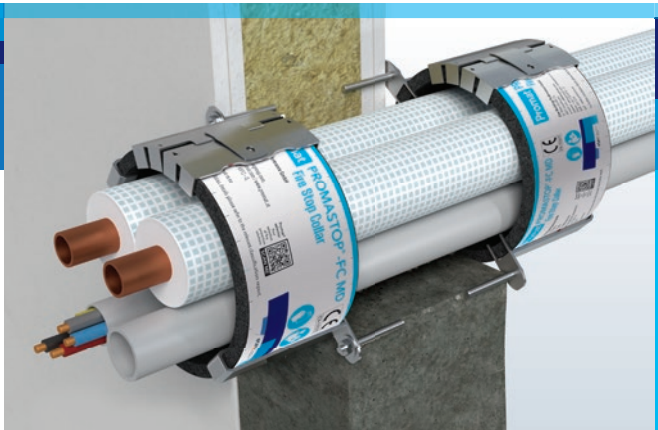
Detail E - Installation of collars under floors in wall corners

Description of drawings

- | | | | |
|---------------------------|--|--|---|
| 1 PROMASTOP®-FC MD collar | 5 Flammable insulation maximum thickness 4 mm (optional) | 8 Seal of peripheral gap, e.g. Promat® joint filler (≤31 mm) | 11 Mineral rock wool min. thickness 100 kg/m ³ |
| 2 Locking brackets | 6 Steel fasteners, e.g. screws or anchors | 9 Wall | 12 PROMASTOP®-CC fire protection compound |
| 3 Fixing holders | 7 Fastener, e.g. threaded rod min. M6 | 10 Floor | |
| 4 Plastic pipe | | | |



FIRE RESISTANCE: EI120



APPLICATION

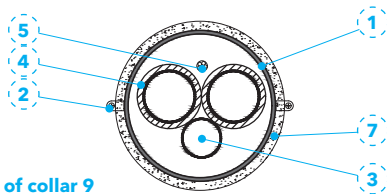
The minimum thickness of the partitions in which penetrations of air conditioning installations can be protected with utilisation of the PROMASTOP®-FC MD ① collars is:

- Flexible wall min. thickness 100 mm,
- Rigid wall min. thickness 100 mm,
- Rigid wall min. thickness 150 mm

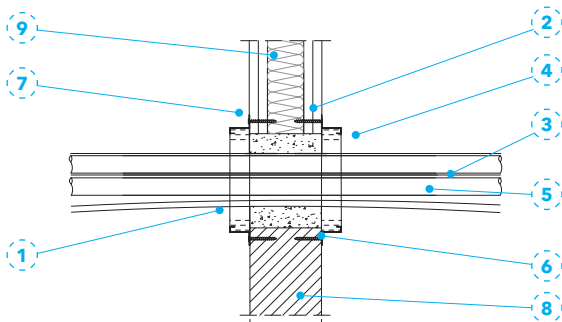
The diameter range of the installations is:

- 2x copper pipes with diameter within the range 6.35÷22.3 mm in flammable insulation, thickness 6÷9 mm,
- PVC-U pipe, max. diameter 42 mm,
- Cable 5x1.5 mm².

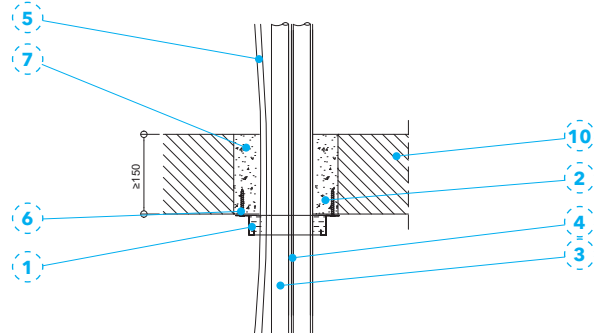
The installations mentioned above constitute the maximum package which can be run through one individual service penetration. It means that the number of individual elements, or their diameter/cross-section area can be reduced.



Detail A - View of collar 9



Detail B - Collars fixed to walls



Detail C - Collars fixed under floors

DETAIL A

This drawing presents a view of a collar ① fixed to the installations at their penetration point through a partition. The collar trimmed to the correct size is locked with utilisation of the locking brackets. Installation of a collar to a partition ⑧ ⑨ is performed with utilisation of the steel fixing holders ② and appropriate fastening materials.

DETAIL B AND C

In order to protect the penetration through walls ⑧ it is necessary to fix the collars ① on both the sides of the partitions. The collars are fixed to the walls with utilisation of steel anchors, or threaded rods, and in the case of flexible walls, and masonry walls of aerated concrete - with utilisation of steel screws 6x100 mm. The collars should be fixed around the installations with max. 10 mm clearance. The gap around the pipes of max. 31 mm width must be filled with a gypsum based joint filler, cement mortar, the Promat joint filler, PROMASTOP®-M mortar ⑦ throughout the whole thickness of the walls.

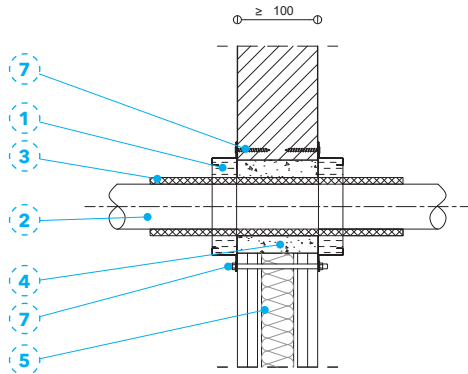
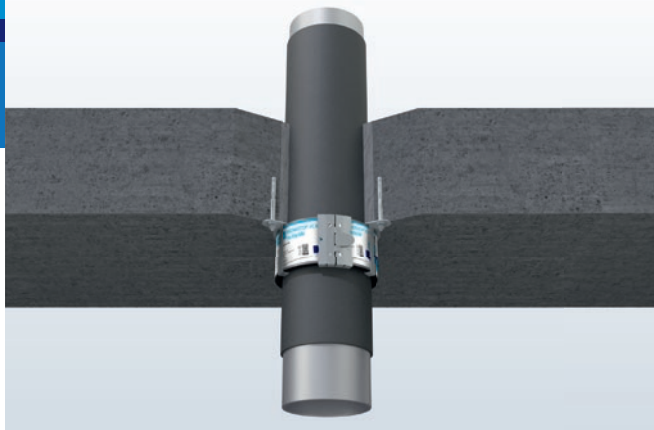
In the case of the penetrations going through floors ⑨ the collars ① should be applied only from the bottom floor side. The installation procedure is the same as for the penetrations constructed in the case of walls. The collars are fixed to the floors with utilisation of steel anchors, or threaded rods.

Description of drawings

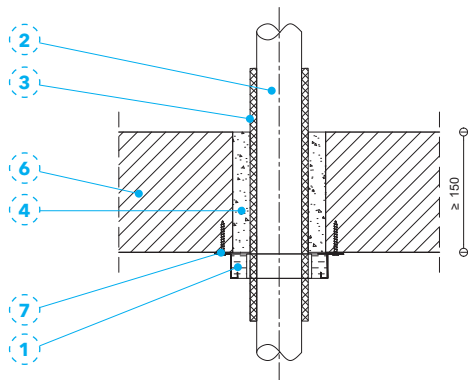
- | | | | |
|---------------------------|--------------------------------------|---------------------------------|----------------|
| ① PROMASTOP®-FC MD collar | ④ 2x copper pipe in flam. insulation | ⑦ Cement mortar of gypsum putty | ⑩ Rigid floor. |
| ② Fixing holders - type C | ⑤ Cable 5x1.5 mm ² | ⑧ Rigid wall | |
| ③ Plastic pipe | ⑥ Steel fastener | ⑨ Flexible wall | |



FIRE RESISTANCE: E120



Detail A - Installation of collars on walls



Detail B - Installation of collars under floors

APPLICATION

The minimum thickness of the partitions in which penetrations can be protected with utilisation of the PROMASTOP®-FC MD 1 collars is:

- Flexible wall min. thickness 100 mm,
- Rigid wall min. thickness 100 mm,
- Rigid wall min. thickness 150 mm.

The PROMASTOP®-FC MD 1 collar can be utilised for providing protection to copper pipes, steel and cast iron pipes in flammable insulation B-s1,d0 (e.g. armaflex), and steel and cast iron pipes in insulation with the reaction to fire class E (e.g. tubolit). The pipe diameter and insulation range is presented in table 1.

Type of pipe	Diameter [mm]	Insulation thickness [mm]	Type of insulation	Type of partition
Copper	Ø6 ÷ Ø21	6 ÷ 9	B-s1,d0	Wall/ Floor
	Ø22 ÷ Ø42	6 ÷ 50	B-s1,d0	Wall/ Floor
Steel and cast iron	Ø15 ÷ Ø76.1	6 ÷ 75	B-s1,d0	Wall
	Ø21.7 ÷ Ø108	6 ÷ 75	B-s1,d0	Floor
	Ø15 ÷ Ø108	9 ÷ 25	E	Wall
	Ø21.7 ÷ Ø108	9 ÷ 25	E	Floor

TABLE 1 Pipe diameter range and insulation.

DETAIL A AND B

In order to protect penetrations installed in walls (5) it is necessary to fix the collars (1) on both the sides of those partitions. The collars are fixed to the walls with utilisation of steel anchors, or threaded rods, and in the case of a flexible wall, and a masonry wall of aerated concrete - with utilisation of steel screws 6x100 mm. The collars should be fixed around the penetrating installations with max. clearance of 10 mm. The clearance around the pipes, width max. 31 mm, must be filled with a gypsum based joint filler, cement mortar, the Promat joint filler, or the PROMASTOP®-M (4) mortar throughout the wall thickness.

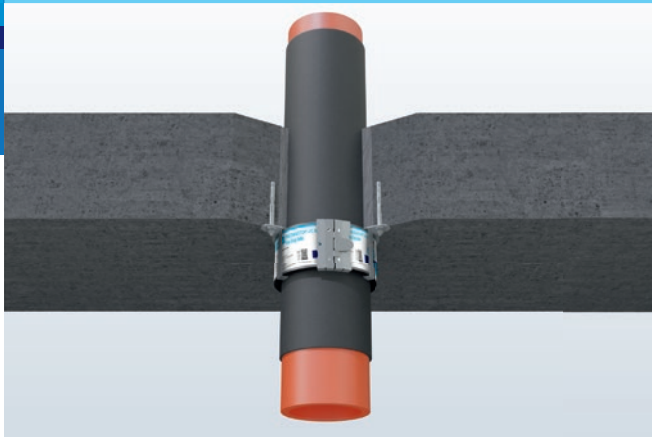
For the penetrations constructed in floors (6) the collars (1) should be installed from the bottom floor side only. The installation procedure in this case is the same as for the penetrations running through walls. The collars are fixed to the floor with utilisation of steel anchors, or threaded rods.

Description of drawings

- 1 PROMASTOP®-FC MD collar
- 2 Steel or copper pipe
- 3 Flammable insulation
- 4 Cement mortar of gypsum putty
- 5 Rigid or flexible wall
- 6 Rigid floor.
- 7 Steel fastener



FIRE RESISTANCE: EI120



APPLICATION

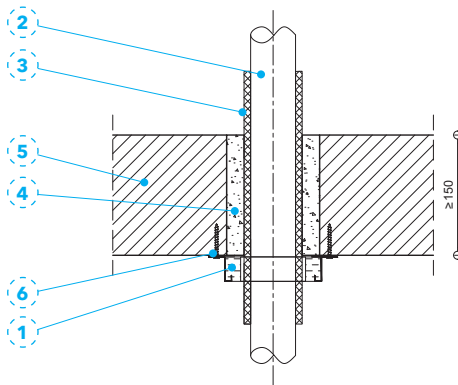
The minimum thickness of the partitions in which penetrations can be protected with utilisation of the PROMASTOP®-FC MD ① collars is:

- Rigid wall min. thickness 150 mm
- Rigid wall min. thickness 100 mm

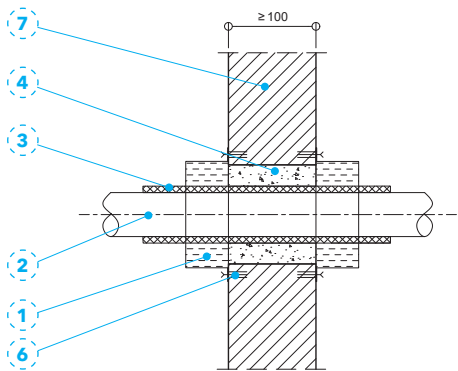
The PROMASTOP®-FC MD collar can be utilised for providing protection for PP-R pipes in flammable insulation B-s1,d0 (e.g. armaflex) and in the insulation types with the reaction to fire class E (e.g. tubolit). The pipe diameter and insulation range is presented in table 1.

Type of pipe	Diameter [mm]	Insulation thickness [mm]	Type of insulation	Type of partition
PP-R	Ø20 ÷ Ø110	13 ÷ 30	E	Strop
	Ø20 ÷ Ø110	9 ÷ 25	B-s1,d0	Strop
	Ø20 ÷ Ø110	9 ÷ 25	B-s1,d0	Ściana

TABLE 1 Pipe diameter range and insulation.



Detail A - Installation of collars under floors



Detail B - Installation of collars in rigid walls

DETAIL A AND B

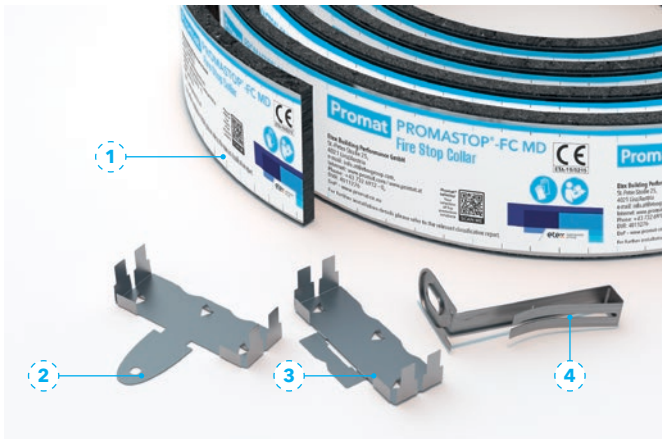
In order to protect penetrations through floors ⑤ it is necessary to install a collar ① from the bottom floor side, and the case of walls ⑦ - on both the sides of such partition. The collars are fixed to rigid floors or walls with utilisation of steel anchors, or threaded rods. The collars should be installed around the installations with max. 10 mm clearance. The gaps around the pipes of max. 31 mm width must be filled with a cement mortar ④ located throughout the partition thickness.

Description of drawings

- ① PROMASTOP®-FC MD collar
- ② Plastic pipe
- ③ Flammable insulation
- ④ Cement mortar
- ⑤ Rigid floor
- ⑥ Steel fastener
- ⑦ Rigid wall

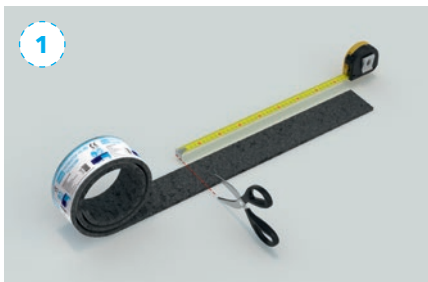


Guidelines for installation of single collars

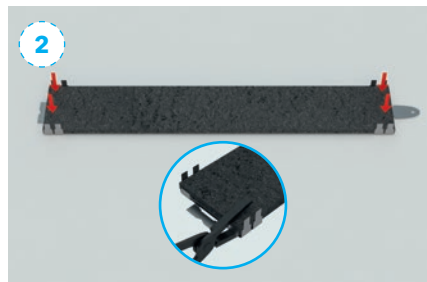


Description of drawings

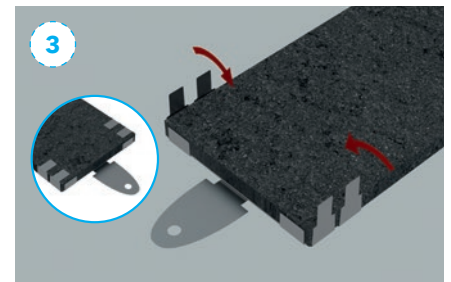
- ① PROMASTOP®-FC MD firestop collar
- ② Locking bracket A
- ③ Locking bracket B
- ④ Fixing holder C



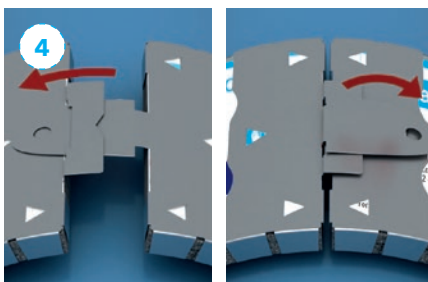
Trim the collar to the appropriate length using the table from the first page.



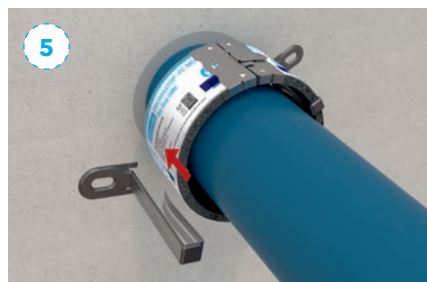
Place the trimmed collar on the surface with the intumescent material facing up. Place and fix the locking brackets A and B on both the sides of the collar with utilisation of an appropriate tool (a click means proper locking of the brackets to the collars).



Bend small tabs 90° towards the middle of the collar using pliers, or a different set of tools.



Fix the collar around the pipe with the metal strip facing outwards. Run the bracket A through the bracket B and then bend the fixing hook 180° towards the back.



Attach the fixing holders C.



Fix to walls or floors with utilisation of appropriate steel fasteners.

Promat

www.promat.com

Headquarters – Belgium

Etex Building Performance NV
Bormstraat 24, 2830 Tiselt
T +32 15 718 100
F +32 15 718 109
E construction@promat.com

Australia

Promat Australia Pty Ltd
1 Scotland Road
SA 5031 Mile End South
T 1800 Promat (776 628)
F +61 8 8352 1014
E PAPL.mail@etexgroup.com

Austria

Etex Building Performance GmbH
St.-Peter-Straße 25 / Bau 39
4021 Linz/Austria
T +43 732 6912-0
F +43 732 6912 3740
E info.at@etexgroup.com
DVR-Nr.: 4011276

Chile

Promat Chile SA
Camino a Melipilla, Maipú
10803 Santiago
T +56 2 2391 2200
E contacto@promat.cl

China

Promat Shanghai Ltd
No.2, Tai Hua Street,
Yonghe Economic District,
511356 Guangzhou, Guangdong
T +86 (20) 8136 1167
F +86 (20) 3222 5275
E info@promat.com.cn

Colombia

Promat Colombia
Av. Kra 19 No. 120-71 Suite 506
110111 Bogotá D.C.
T +57 1 355 3500
F +57 1 355 1785
E info@promat.com.co

Czech Republic

Promat sro
Ckalova 22/784
16000 Praha 6 - Bubeneč
T +420 2 2439 0811
F +420 2 3333 3576
E promat@promatpraha.cz

Denmark

Promat Nordic
Komettevej 36, 6230 Rødekro
Etex Nordic A/S
Vendersgade 74, 3 Fredericia
DK-7000
T +45 7366 1999
F +45 7466 1020
E info@promat.nu

France

Etex France Building Performance
500, rue Marcel Demouque
Zone Agroparc, CS 70088,
84915 Avignon Cedex 9
T +33 1 3979 6160
F +33 1 3971 1660
E info@promat.fr

Germany

Promat GmbH
Scheifenkamp 16
40878 Ratingen
T +49 2102 493 0
F +49 2102 493 111
E mail@promat.de

Hong Kong

Promat International (Asia Pacific) Ltd
Room 1010, C.C. Wu Building
302-308 Hennessy Road, Wanchai
T +852 2836 3692
E promat.hk@etexgroup.com

Hungary

Promat Hungary
(Division of Promat doo)
Pirosrozsza u. 32
1163 Budapest
T +36 1 317 5891
E promat.hu@etexgroup.com

India

Promat Fire & Insulation Pte Ltd
Unit 605, 6th Floor, Tower B
Global Business Park
Mehrauli Gurgaon Road
Sector 26, Gurgaon
122002 Haryana
T +91 12 4434 6865
E info@promat-india.com

Italy

Etex Building Performance S.p.A.
Milanofiori, Strada 2, Palazzo C4
20057 Assago (MI)
T +39 02 99778611
E etexbp.italia@etexgroup.com

Japan

Promat Japan Corporation
Pacific Marks Shinjuku
4-15-7 Nishi-Shinjuku, Shinjuku-Ku
160-0023 Tokyo
T +81 3 3377 2821
F +81 3 3378 2821
E sales@promat.jp

Malaysia

Etex Malaysia Sdn Bhd
(Formerly known as Promat (Malaysia) Sdn. Bhd.)
Unit 19-02-01, Level 2, Wisma Tune
19 Lorong Dungun, Damansara Heights
50490 Kuala Lumpur
T +60 3 2095 8555
E promat.my@etexgroup.com

Netherlands

Etex Building Performance B.V.
Oosterhorn 32-34,
9936HD Farmsum
T +31 30 241 0770
F +31 30 241 0771
E info@promat.nl

Peru

Promat Peru
Jr. Republica del Ecuador 448
15079 Cercado de Lima
T +51 619 6400
E contacto@promat.pe

Poland

Promat TOP Sp zoo
Przeclawska 8
03-879 Warszawa
T +48 22 212 2280
F +48 22 212 2290
E top@promatop.pl

Romania

Romania Etex Building Performance S.A.
Vulturilor Nr. 98, 5th Floor
030857 Bucharest
T +40 31 224 01 00
F +40 31 224 01 01
E promat.ro@etexgroup.com

Singapore

Promat Building System Pte Ltd
10 Science Park Road, #03-14 The Alpha
Singapore Science Park II
117684 Singapore
T +65 6776 7635
E promat.sg@etexgroup.com

Slovenia

Promat doo
Kidriceva 56b
4220 Škofja Loka
T +386 4515 1451
F +386 4515 1450
E promat.si@etexgroup.com

South Korea

Promat International (Asia Pacific) Ltd (Korea Branch Office)
11F, Dong-a Building
117 Namdaemun-ro, Jung-gu
04522 Seoul
T +82 70 7794 8216
F +82 2 779 5566
E info@promat-ap.com

Spain

Promat Ibérica SA
C/Velazquez 47, planta 6ª
izquierda
28001 Madrid
T +34 91 781 1550
F +34 91 575 1597
E info@promat.es

Switzerland

Promat AG
Industriestrasse 3
9542 Münchwilen
T +41 52 320 94 00
F +41 52 320 94 02
E office@promat.ch

UAE

Etex Middle East LLC
Plot no. 597-921
Dubai Investment Park 2
PO Box 123945, Dubai
T +971 4 885 3070
F +971 4 885 3588
E info@promatfp.ae

UK

Etex Building Performance Ltd
Gordano House
Marsh Lane, Easton-in-Gordano
BS20 ONE Bristol
T +44 (0)800 373 636
F +44 1275 379 037
E Sales: fpsales@etexbp.co.uk
Technical: technical.promat@etexbp.co.uk

USA

Promat Inc
1731 Fred Lawson Drive
TN 37801 Maryville
T +1 865 681 0155
F +1 865 681 0016
E sales@promat.us



Visit us at
www.promat.com